

# MAKING RESEARCH SUSTAINABLE

## Costs of Sponsored Research

### DIRECT COSTS



Supplies, such as notebooks, test tubes and beakers



Specialized equipment, such as microscopes and mass spectrometers



Salary support and stipends for faculty, researchers, staff and students performing work on the project



Any travel that may be necessary for conducting research or sharing results

### SUCCESSFUL RESEARCH PROGRAMS

require brilliant faculty, researchers and students; up-to-date lab space and specialized equipment; libraries with access to the latest scientific journals; and administrative support to perform research projects. SUNY incurs costs for all these components, and sponsors share in the costs attributable to the work being performed for them by SUNY.

### FACILITIES AND ADMINISTRATIVE (F&A) COSTS



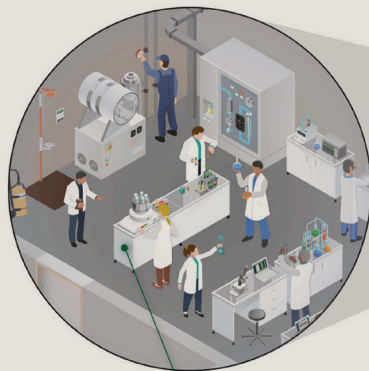
#### Administrative

Compliance activities to meet federal, state, and local regulations  
Payroll, accounting and purchasing functions necessary to conduct business  
Comprehensive insurance to cover sponsored programs activities

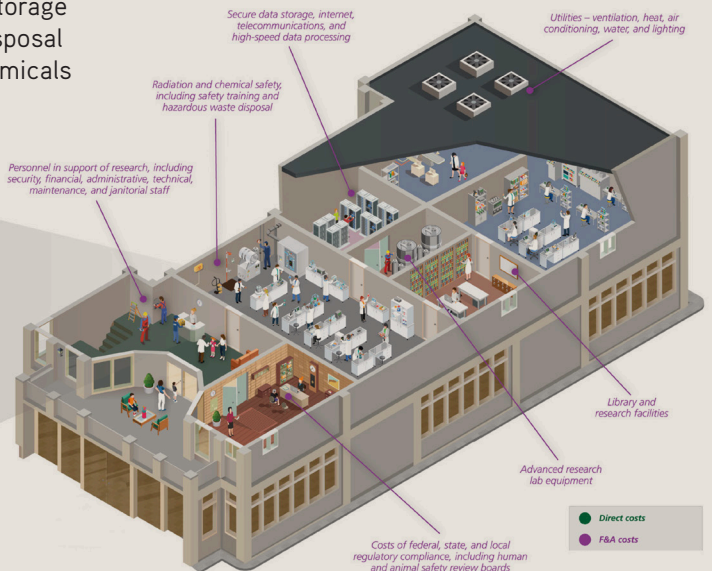


#### Facilities

Construction and maintenance of labs  
Utilities such as lighting, water, air conditioning, and heat  
Telecommunications, internet, and data storage  
Radiation safety and hazardous waste disposal  
Security for sensitive and dangerous chemicals



Direct costs - These expenses solely cover research and include lab supplies and equipment, salaries and stipends for researchers and graduate students, and travel costs for conducting and sharing research



# MAKING RESEARCH SUSTAINABLE

## Why Facilities and Administrative (F&A) Cost Recovery is Important

F&A costs are actual campus expenditures. Recouping the full, real costs of research is essential to maintaining campus operations — for everything from keeping the lights on to ensuring that the labs where research is conducted are state of the art and safe for research staff.

**It is extremely important** that SUNY receive full reimbursement for F&A.

### SUNY'S F&A RATES

Each SUNY campus has a specific F&A rate it applies to obtain reimbursement for infrastructure costs associated with sponsored research. The Research Foundation and the federal government work to negotiate SUNY F&A rates every three to four years. Talk to your Sponsored Programs Office to find out what the rate is at your campus.

**100%** of F&A recovery funds return to the campus that generated the costs.

### OPPORTUNITIES TO ENHANCE F&A COST RECOVERY

The F&A costs recovered on grants allow SUNY to build, maintain and operate research facilities. Every proposal budget that is submitted for sponsored funding should seek full-cost recovery.

Strategies include:

- ▶ **Direct charge** where allowable
- ▶ Apply **full rates** more consistently

### RISKS OF F&A UNDER RECOVERY

Research facilities could deteriorate

Compliance problems could go undetected

Campuses may not be able to accept research awards that require unrecovered F&A

Campuses would have to find other internal funds to cover the difference